



SALEM HARBOUR ENERGY CENTER
EPC LEVEL 2 SCHEDULE



Footprint Power Salem
Harbor Development LP

SHEC_Bid_S14B-1 - SHEC Level 2 client dd Dec02

Activity ID	Activity Name	Original Duration	Start	Finish	2013												2014												2015												2016												2017																							
					J	F	M	A	M	J	Jul	A	S	O	N	D	J	F	M	A	M	J	Jul	A	S	O	N	D	J	F	M	A	M	J	Jul	A	S	O	N	D	J	F	M	A	M	J	Jul	A	S	O	N	D	J	F	M	A	M	J	Jul	A	S	O	N	D												
					SHEC Level 2 client dd Dec02												SHEC 2 units 1 on 1 Schedule												PROJECT MILESTONES																																															
HIT1000	Contractor Selection and Start of Contract Negotiations	0	02-Sep-13 A	01-Dec-17													◆ Contractor Selection and Start of Contract Negotiations																																																											
HIT1020	IEP EPC preliminary works start	0	01-Apr-14 A														◆ IEP EPC preliminary works start																																																											
HIT1010	Full EPC Contract signature	0	02-Dec-14*																										◆ Full EPC Contract signature																																															
HIT1080	LNTPEPC Commencement date	0	02-Dec-14*																										◆ LNTPEPC Commencement date																																															
HIT1390	Start Construction Mobilization	0	17-Dec-14																										◆ Start Construction Mobilization																																															
HIT1022	EPC NTP Commencement latest date	0	15-Jan-15*																										◆ EPC NTP Commencement latest date																																															
HIT1210	GT 1 pedestal ready to receive GT 1	0	13-Jun-15																										◆ GT 1 pedestal ready to receive GT 1																																															
HIT1230	Finish piling ACC main foundations	0	29-Jun-15																										◆ Finish piling ACC main foundations																																															
HIT1220	GT 2 pedestal ready to receive GT 2	0	13-Jul-15																										◆ GT 2 pedestal ready to receive GT 2																																															
HIT1240	Finish piling deep foundations	0	28-Jul-15																										◆ Finish piling deep foundations																																															
HIT1190	ST 1 pedestal ready to receive ST 1	0	09-Oct-15																										◆ ST 1 pedestal ready to receive ST 1																																															
HIT1180	Concrete Stack Release Safety area	0	11-Oct-15																										◆ Concrete Stack Release Safety area																																															
HIT1290	Start HRSG 1 Deliveries (C+ Modules)	0	26-Oct-15																										◆ Start HRSG 1 Deliveries (C+ Modules)																																															
HIT1350	GT 1 at site	0	01-Nov-15																										◆ GT 1 at site																																															
HIT1370	GT 1 GEN at site	0	01-Nov-15																										◆ GT 1 GEN at site																																															
HIT1200	ST 2 pedestal ready to receive ST 2	0	20-Nov-15																										◆ ST 2 pedestal ready to receive ST 2																																															
HIT1300	Start HRSG 2 Deliveries (C+ Modules)	0	23-Nov-15																										◆ Start HRSG 2 Deliveries (C+ Modules)																																															
HIT1360	GT 2 at site	0	01-Dec-15																										◆ GT 2 at site																																															
HIT1380	GT 2 GEN at site	0	01-Dec-15																										◆ GT 2 GEN at site																																															
HIT1280	Complete HRSG 1 delivery (BOP related equipment)	0	26-Jan-16																										◆ Complete HRSG 1 delivery (BOP related equipment)																																															
HIT1260	GT main transformers at site	0	29-Jan-16																										◆ GT main transformers at site																																															
HIT1270	Complete HRSG 2 delivery (BOP related equipment)	0	23-Feb-16																										◆ Complete HRSG 2 delivery (BOP related equipment)																																															
HIT1310	ST 1 at site	0	29-Feb-16																										◆ ST 1 at site																																															
HIT1330	ST 1 GEN at site	0	29-Feb-16																										◆ ST 1 GEN at site																																															
HIT1250	ST main transformers at site	0	29-Mar-16																										◆ ST main transformers at site																																															
HIT1320	ST 2 at site	0	30-Mar-16																										◆ ST 2 at site																																															
HIT1340	ST 2 GEN at site	0	30-Mar-16																										◆ ST 2 GEN at site																																															
HIT1100	Mechanical Completion	0	25-Sep-16																																						◆ Mechanical Completion																																			
HIT1170	Finish Installation ACC1 and ACC2	0	27-Nov-16																																						◆ Finish Installation ACC1 and ACC2																																			
HIT1042	First Fire GT1	0	16-Jan-17																																						◆ First Fire GT1																																			
HIT1043	First Fire GT2	0	31-Jan-17																																						◆ First Fire GT2																																			
HIT1150	Complete Steam blows Unit 1	0	15-Feb-17																																						◆ Complete Steam blows Unit 1																																			
HIT1160	Complete Steam blows Unit 2	0	26-Feb-17																																						◆ Complete Steam blows Unit 2																																			
HIT1130	First Steam to ST Unit 1	0	06-Mar-17																																						◆ First Steam to ST Unit 1																																			
HIT1140	First Steam to ST Unit 2	0	17-Mar-17																																						◆ First Steam to ST Unit 2																																			
HIT1110	Start Performance Testing Unit 1	0	31-Mar-17																																						◆ Start Performance Testing Unit 1																																			
HIT1120	Start Performance Testing Unit 2	0	11-Apr-17																																						◆ Start Performance Testing Unit 2																																			
HIT1090	Guaranteed Substantial Completion	0	31-May-17																																						◆ Guaranteed Substantial Completion																																			
HIT1050	Commercial Operation Date (COD)	0	01-Jun-17																																						◆ Commercial Operation Date (COD)																																			
HIT1400	Final Completion Date (estimated)	0	01-Dec-17																																						◆ Final Completion Date (estimated)																																			
CLIENT MILESTONES					524	01-Dec-14	02-Dec-16																																																																					
HIT1032	Owner provided permits available	0	01-Dec-14*																										◆ Owner provided permits available																																															
HIT1030	Agreed Coordinated Access to Site for Temporary/Site Preparation	0	02-Dec-14																										◆ Agreed Coordinated Access to Site for Temporary/Site Preparation																																															
HIT1032_20	Agreed coordinated access to Full Site (exc ACC and ST bldg.)	0	15-Dec-14*																										◆ Agreed coordinated access to Full Site (exc ACC and ST bldg.)																																															
HIT1032_	Permits to be secured by Owner available	0	15-Jan-15																										◆ Permits to be secured by Owner available																																															
HIT1030_	Agreed coordinated access to Area ST Bldg. and Substation	0	15-Jan-15																										◆ Agreed coordinated access to Area ST Bldg. and Substation																																															
HIT1032_10	Agreed coordinated access to ACC Area	0	15-Jan-15																										◆ Agreed coordinated access to ACC Area																																															
HIT1030_10	Release Stack #5 Safety Area required	0	29-Apr-15																										◆ Release Stack #5 Safety Area required																																															
HIT1039_	Natural gas pipeline required for tie-in	0	15-Sep-16																																						◆ Natural gas pipeline required for tie-in																																			
HIT1036_	Interconnection points at NGRID switchyard available for tie in	0	15-Oct-16																																						◆ Interconnection points at NGRID switchyard available for tie in																																			
HIT1037_	Interconnection points at NGRID switchyard available for back feed	0	12-Nov-16																																						◆ Interconnection points at NGRID switchyard available for back feed																																			
HIT1040_	Natural gas required for consumption	0	02-Dec-16																																						◆ Natural gas required for consumption																																			
ENGINEERING					709	11-Dec-13 A	29-Aug-16																																																																					
PREENGINEERING					379	11-Dec-13 A	25-Dec-14																																																																					
ENG0020	PIE CKOM	0	11-Dec-13 A																										◆ PIE CKOM																																															
ENG4030	PIE Layout Drawings submittal	0	19-Feb-14 A																										◆ PIE Layout Drawings submittal																																															
HIT1070	Laydown and temporary installations Plan	45	01-Apr-14 A	15-May-14 A																																					◆ Laydown and temporary installations Plan																																			

█ Remaining Level of Effort	█ Actual Work	█ Critical Remaining ...
█ Actual Level of Effort	█ Remaining Work	◆ Milestone

Note: Third parties' progress to be confirmed by IEP after LNTPE or after assignment of contract

Date	Revision	Checked	Approved
01-Dec-14	Contractual version	OMSI	AMR
02-Dec-14	Contractual version	OMSI	AMR



SALEM HARBOUR ENERGY CENTER
EPC LEVEL 2 SCHEDULE

SHEC_Bid_S14B-1 - SHEC Level 2 client dd Dec02



Footprint Power Salem
Harbor Development LP

Activity ID, Activity Name, Original Duration, Start, Finish, 2013, 2014, 2015, 2016, 2017. Includes activities like General layout, CIVIL ENGINEERING, MAIN EQUIPMENT FOUNDATIONS, TURBINES BUILDINGS, GMRS BUILDING, ELECTRICAL BUILDINGS, REST OF CIVIL DESIGN, MECHANICAL ENGINEERING, and Pipe and Instrument Diagrams (PIDs).

Legend: Remaining Level of Effort (green bar), Actual Work (blue bar), Critical Remaining (red bar), Actual Level of Effort (dark blue bar), Remaining Work (light green bar), Milestone (diamond symbol).

Table with columns: Date, Revision, Checked, Approved. Shows dates 01-Dec-14 and 02-Dec-14, revision 'Contractual version', and checked by 'OMSI' and approved by 'AMR'.

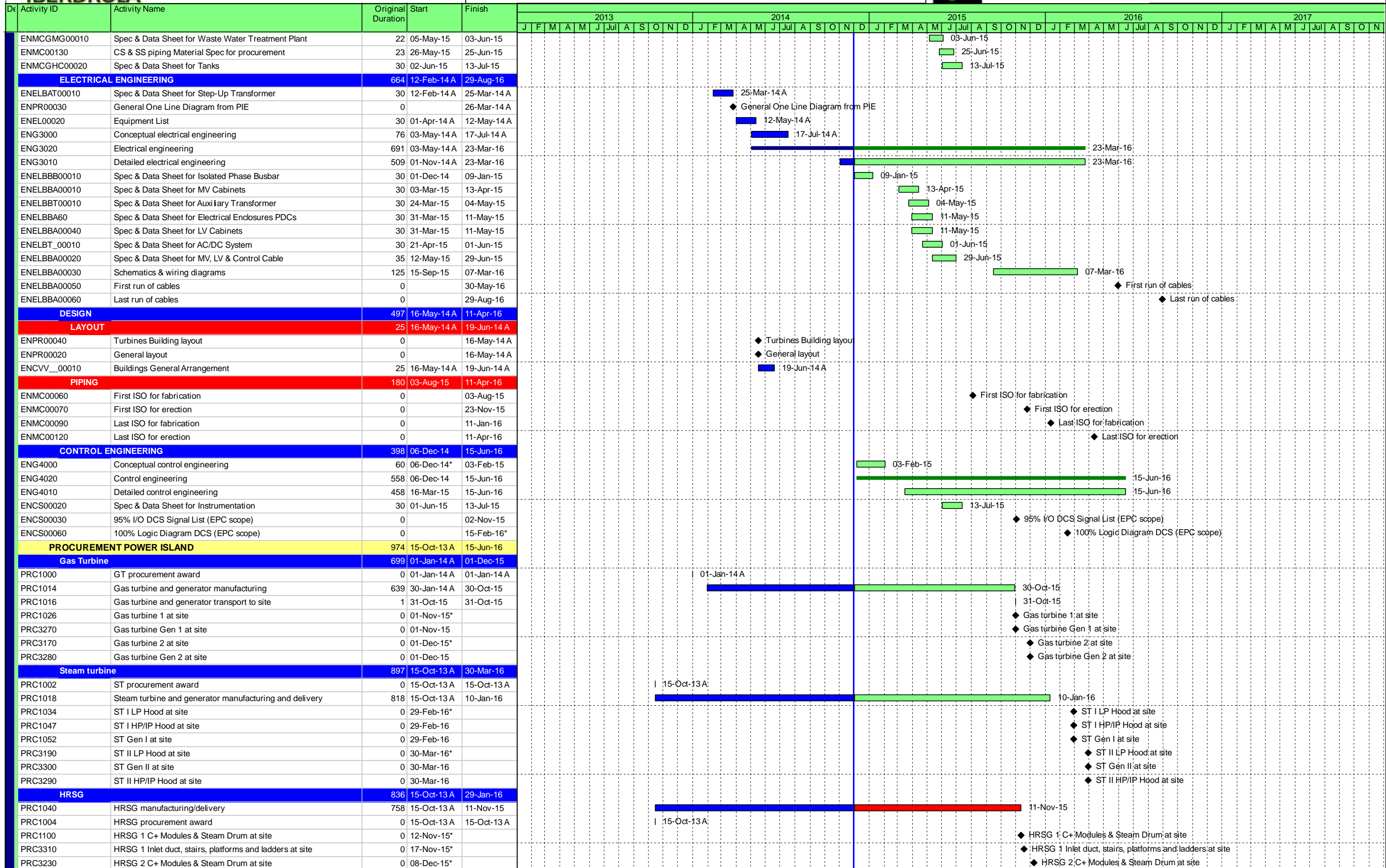


SALEM HARBOUR ENERGY CENTER
EPC LEVEL 2 SCHEDULE



Footprint Power Salem Harbor Development LP

SHEC_Bid_S14B-1 - SHEC Level 2 client dd Dec02



Legend for Gantt chart: Remaining Level of Effort (green bar), Actual Work (blue bar), Critical Remaining (red bar), Actual Level of Effort (dark blue bar), Remaining Work (light green bar), Milestone (diamond symbol).

Page 3 of 9
Note: Third parties' progress to be confirmed by IEP after LNTP or after assignment of contract

Table with 5 columns: Date, Revision, Checked, Approved. Contains two rows of contract version information.



SALEM HARBOUR ENERGY CENTER
EPC LEVEL 2 SCHEDULE



Footprint Power Salem
Harbor Development LP

SHEC_Bid_S14B-1 - SHEC Level 2 client dd Dec02

Activity ID	Activity Name	Original Duration	Start	Finish	2013												2014												2015												2016												2017											
					J	F	M	A	M	J	Jul	A	S	O	N	D	J	F	M	A	M	J	Jul	A	S	O	N	D	J	F	M	A	M	J	Jul	A	S	O	N	D	J	F	M	A	M	J	Jul	A	S	O	N	D	J	F	M	A	M	J	Jul	A	S	O	N	D
PRC3320	HRSG 2 Inlet duct, stairs, platforms and ladders at site	0	14-Dec-15*																																																		◆ HRSG 2 Inlet duct, stairs, platforms and ladders at site											
PRC3330	HRSG 1 LB and SB piping at site	0	15-Dec-15*																																																		◆ HRSG 1 LB and SB piping at site											
PRC3340	HRSG 2 LB and SB piping at site	0	29-Jan-16*																																																		◆ HRSG 2 LB and SB piping at site											
DCS		0	15-Jun-16	15-Jun-16																																																												
PRC3060	DCS systems on site by PIE	0		15-Jun-16*																																																	◆ DCS systems on site by PIE											
PROCUREMENT BOP		779	02-Sep-13 A	25-Aug-16																																																												
MECHANICAL BOP		738	02-Sep-13 A	29-Jun-16																																																												
PRC2140	Procurement main systems: condensate, feedwater and steam	314	17-Dec-14	27-Oct-15																																																	27-Oct-15											
PRC2152	Procurement auxiliary systems	364	13-Apr-15	11-Apr-16																																																	11-Apr-16											
PRC2148	Procurement piping and chemical systems	407	19-May-15	29-Jun-16																																																	29-Jun-16											
Steam system		0	29-Feb-16	29-Feb-16																																																												
PRC2000	Bypass valves on site	0		29-Feb-16																																																	◆ Bypass valves on site											
Feedwater system		317	03-Mar-15	18-May-16																																																												
PRC2010	Procurement feedwater system	443	03-Mar-15	18-May-16																																																	18-May-16											
PRMCLA_00010	Feedwater pumps Request for Quotation (RFQ)	65	03-Mar-15	01-Jun-15																																																	01-Jun-15											
PRMCLA_00020	Feedwater Pumps Fabrication	232	02-Jun-15	20-Apr-16																																																	20-Apr-16											
PRMCLA_00030	Feedwater Pumps Transport	20	20-Apr-16	18-May-16																																																	18-May-16											
Condensate system		585	02-Sep-13 A	28-Nov-15																																																												
PRMCMAG30	ACC Request for Quotation (RFQ)	45	02-Sep-13 A	01-Nov-13 A																																																	01-Nov-13 A											
PRMCMAG40	ACC Review and Award	13	01-Dec-14	17-Dec-14																																																	17-Dec-14											
PRC2130	Procurement air cooled condensers	314	17-Dec-14	27-Oct-15																																																	27-Oct-15											
PRC3240	Barge transportation and site storage	32	27-Oct-15	28-Nov-15																																																	28-Nov-15											
Auxiliary cooling water system		211	14-Apr-15	02-Feb-16																																																												
PRC2030	Procurement auxiliary cooling water system	295	14-Apr-15	02-Feb-16																																																	02-Feb-16											
PRMCPG_00040	Open Cooling Water Pumps Request for Quotation (RFQ)	65	14-Apr-15	13-Jul-15																																																	13-Jul-15											
PRMCPG_00010	Closed Cooling Water Pumps Request for Quotation (RFQ)	65	14-Apr-15	13-Jul-15																																																	13-Jul-15											
PRMCPG_00050	Open Cooling Water Pumps Fabrication	126	14-Jul-15	05-Jan-16																																																	05-Jan-16											
PRMCPG_00020	Closed Cooling Water Pumps Fabrication	126	14-Jul-15	05-Jan-16																																																	05-Jan-16											
PRMCPG_00030	Closed Cooling Water Pumps Transport	20	06-Jan-16	02-Feb-16																																																	02-Feb-16											
PRMCPG_00060	Open Cooling Water Pumps Transport	20	06-Jan-16	02-Feb-16																																																	02-Feb-16											
Gas system		214	02-Apr-15	26-Jan-16																																																												
PRC2180	Procurement gas regulation station	300	02-Apr-15	26-Jan-16																																																	26-Jan-16											
PRMCEK_00010	Gas Regulation Station Request for Quotation (RFQ)	65	02-Apr-15	01-Jul-15																																																	01-Jul-15											
PRMCEK_00020	Gas Regulation Station Fabrication	129	02-Jul-15	29-Dec-15																																																	29-Dec-15											
PRMCEK_00030	Gas Regulation Station Transport	20	30-Dec-15	26-Jan-16																																																	26-Jan-16											
Waste water treatment system		211	03-Jun-15	24-Mar-16																																																												
PRC3250	Procurement Waste Water Treatment	295	03-Jun-15	24-Mar-16																																																	24-Mar-16											
PRMCGMG30	Waste Water Treatment Request for Quotation (RFQ)	65	03-Jun-15	02-Sep-15																																																	02-Sep-15											
PRMCGMG40	Waste Water Treatment Fabrication	126	02-Sep-15	25-Feb-16																																																	25-Feb-16											
PRMCGMG50	Waste Water Treatment Transport	20	25-Feb-16	24-Mar-16																																																	24-Mar-16											
Fire protection system		251	31-Mar-15	15-Mar-16																																																												
PRC2100	Procurement fire protection system	351	31-Mar-15	15-Mar-16																																																	15-Mar-16											
PRMCSG_00010	Fire Fighting Pumps Request for Quotation (RFQ)	65	31-Mar-15	29-Jun-15																																																	29-Jun-15											
PRMCSG_00020	Fire Fighting Pumps/System Fabrication	166	30-Jun-15	16-Feb-16																																																	16-Feb-16											
PRMCSG_00030	Fire Fighting Pumps/System Transport	20	17-Feb-16	15-Mar-16																																																	15-Mar-16											
Chemical systems		247	27-Oct-15	29-Jun-16																																																												
PRC2050	Procurement sample and injection systems	247	27-Oct-15	29-Jun-16																																																	29-Jun-16											
Auxiliary systems		364	13-Apr-15	11-Apr-16																																																												
PRC3260	Procurement Aux. Boiler/delivery	364	13-Apr-15	11-Apr-16																																																	11-Apr-16											
PRC2055	Procurement instrument air system	90	18-May-15	16-Aug-15																																																	16-Aug-15											
PRC2110	Procurement rest of mechanical systems	300	20-May-15	14-Mar-16																																																	14-Mar-16											
PRC2070	Manufacturing & delivery instrument air system	180	16-Aug-15	12-Feb-16																																																	12-Feb-16											
PRC2090	Procurement HVAC system	150	27-Sep-15	23-Feb-16																																																	23-Feb-16											
Pipe		363	19-May-15	16-May-16																																																												
PRC2125	Procurement alloy piping	350	19-May-15	03-May-16																																																	03-May-16											
PRC2120	Procurement carbon/stainless steel piping/valves	283	07-Aug-15	16-May-16																																																	16-May-16											
PRC2210	Rest of piping/valves: first arrival to site	0	13-Feb-16																																																		◆ Rest of piping/valves: first arrival to site											
PRC2230	Alloy piping: first arrival to site	0	14-Mar-16																																																		◆ Alloy piping: first arrival to site											
PRC2220	Rest of piping/valves: last arrival to site	0	16-May-16																																																		◆ Rest of piping/valves: last arrival to site											
ELECTRICAL BOP		439	30-Oct-14 A	05-Jul-16																																																												
PRC3090	Procurement transformers, isophase bus & breakers	500	30-Oct-14 A	12-Mar-16																																																	12-Mar-16											

■ Remaining Level of Effort
 ■ Actual Work
 ■ Critical Remaining ...
■ Actual Level of Effort
 ■ Remaining Work
 ◆ Milestone

Note: Third parties' progress to be confirmed by IEP after LNTP or after assignment of contract

Date	Revision	Checked	Approved
01-Dec-14	Contractual version	OMSI	AMR
02-Dec-14	Contractual version	OMSI	AMR



SALEM HARBOUR ENERGY CENTER
EPC LEVEL 2 SCHEDULE



Footprint Power Salem
Harbor Development LP

SHEC_Bid_S14B-1 - SHEC Level 2 client dd Dec02

Activity ID	Activity Name	Original Duration	Start	Finish	2013												2014												2015												2016												2017											
					J	F	M	A	M	J	Jul	A	S	O	N	D	J	F	M	A	M	J	Jul	A	S	O	N	D	J	F	M	A	M	J	Jul	A	S	O	N	D	J	F	M	A	M	J	Jul	A	S	O	N	D	J	F	M	A	M	J	Jul	A	S	O	N	D
PRC3100	Procurement MV, LV and UPS	319	14-Apr-15	26-Feb-16																									26-Feb-16																																			
PRC3160	Procurement rest of electrical systems	300	08-Aug-15	02-Jun-16																																					02-Jun-16																							
PRC3150	Procurement cables and trays	240	27-Sep-15	23-May-16																																					23-May-16																							
Isophase bars and breakers		308	12-Jan-15	16-Mar-16																																																												
PRELBBB00010	Isolated Phase Busbar Request for Quotation (RFQ)	67	12-Jan-15	14-Apr-15																									14-Apr-15																																			
PRC3010	Procurement isophase bus	430	12-Jan-15	16-Mar-16																																					16-Mar-16																							
PRELBBB00020	Isolated Phase Bus-bar Fabrication	197	15-Apr-15	14-Jan-16																																					14-Jan-16																							
PRELBBB00040	Isolated Phase Bus-bar Transport	44	14-Jan-16	16-Mar-16																																					16-Mar-16																							
Transformers		411	30-Oct-14 A	26-May-16																																																												
PRELBAT00010	Step-Up Transformers Request for Quotation (RFQ)	55	30-Oct-14 A	12-Jan-15													12-Jan-15																																															
PRELBAT00030	GT Step-Up Transformers Fabrication	232	15-Jan-15	04-Dec-15																																					04-Dec-15																							
PRELBAT00075	ST Step-Up Transformer Fabrication	274	15-Jan-15	02-Feb-16																																					02-Feb-16																							
PRELBBT00010	Auxiliary Transformer Request for Quotation (RFQ)	67	05-May-15	05-Aug-15																									05-Aug-15																																			
PRC3140	Procurement aux transformers	300	18-May-15	12-Mar-16																																					12-Mar-16																							
PRELBBT00020	Auxiliary Transformer Fabrication	171	06-Aug-15	31-Mar-16																																					31-Mar-16																							
PRELBAT00070	GT Step-Up Transformers Transport	40	07-Dec-15	29-Jan-16																																					29-Jan-16																							
PRC3120	GT main transformers at site	0	29-Jan-16																																						◆ GT main transformers at site																							
PRELBAT00080	ST Step-Up Transformer Transport	40	03-Feb-16	29-Mar-16																																					29-Mar-16																							
PRC3130	ST main transformers at site	0	29-Mar-16																																						◆ ST main transformers at site																							
PRELBBT00030	Auxiliary Transformer Transport	40	01-Apr-16	26-May-16																																					26-May-16																							
MV and LV systems		321	14-Apr-15	05-Jul-16																																																												
PRELBBA00010	MV Cabinets Required for Quotation (RFQ)	65	14-Apr-15	13-Jul-15																									13-Jul-15																																			
PRELBBA00070	LV Cabinets Required for Quotation (RFQ)	65	12-May-15	10-Aug-15																									10-Aug-15																																			
PRELBBA90	PDCs Required for Quotation (RFQ)	65	02-Jun-15	31-Aug-15																									31-Aug-15																																			
PRC3040	Procurement MV equipment	210	29-Jun-15	24-Jan-16																																					24-Jan-16																							
PRELBBA00020	MV Cabinets Fabrication	125	14-Jul-15	04-Jan-16																																					04-Jan-16																							
PRC3050	Procurement LV equipment	210	29-Jul-15	23-Feb-16																																					23-Feb-16																							
PRELBBA00080	LV Cabinets Fabrication	120	11-Aug-15	25-Jan-16																																					25-Jan-16																							
PRELBBA100	PDCs Fabrication	155	02-Nov-15	03-Jun-16																																					03-Jun-16																							
PRELBBA00060	MV Cabinets shipment to integrator	44	05-Jan-16	04-Mar-16																																					04-Mar-16																							
PRELBBA00090	LV Cabinets shipment to integrator	44	26-Jan-16	25-Mar-16																																					25-Mar-16																							
PRELBBA110	PDCs shipment to site	22	06-Jun-16	05-Jul-16																																					05-Jul-16																							
UPS		270	01-Jun-15	26-Feb-16																																																												
PRC3030	Procurement AC/DC system	270	01-Jun-15	26-Feb-16																																					26-Feb-16																							
Cables		240	27-Sep-15	23-May-16																																																												
PRC3020	Procurement cables and trays	240	27-Sep-15	23-May-16																																					23-May-16																							
Rest electrical equipment		300	08-Aug-15	02-Jun-16																																																												
PRC3070	Procurement rest of electrical systems	300	08-Aug-15	02-Jun-16																																					02-Jun-16																							
HT line		413	24-Feb-15	11-Apr-16																																																												
A1100	GIS Procurement	93	24-Feb-15	27-May-15																									27-May-15																																			
A1110	GIS Manufacturing and delivery	320	28-May-15	11-Apr-16																																					11-Apr-16																							
A1120	GIS at site	0		11-Apr-16																																					◆ GIS at site																							
INSTRUMENTATION & CONTROL		248	15-Sep-15	25-Aug-16																																																												
Instrumentation		248	15-Sep-15	25-Aug-16																																																												
PRCS00010	Procurement and manufacturing Instrumentation	226	15-Sep-15	26-Jul-16																																					26-Jul-16																							
PRCS00020	Instrumentation Transport	108	29-Mar-16	25-Aug-16																																					25-Aug-16																							
CIVIL		384	22-Oct-14 A	11-Apr-16																																																												
ON SITE TANKS		195	14-Jul-15	11-Apr-16																																																												
PRMCGHC00030	Tanks Request for Quotation (RFQ)	65	14-Jul-15	12-Oct-15																									12-Oct-15																																			
PRMCGHC00040	Tanks Fabrication	86	13-Oct-15	09-Feb-16																																					09-Feb-16																							
PRMCGHC00060	Tanks Transport	44	10-Feb-16	11-Apr-16																																					11-Apr-16																							
CHIMNEY		176	22-Oct-14 A	24-Jun-15																																																												
PRMCXXX60	Chimney Negotiations	60	22-Oct-14 A	30-Dec-14													30-Dec-14																																															
PRMCXXX65	Chimney contract award (LNTF for design)	0	02-Dec-14																																						◆ Chimney contract award (LNTF for design)																							
PRMCXXX67	Chimney Contractor Mobilization for design	10	15-Jan-15	28-Jan-15																									28-Jan-15																																			
PRMCXXX81	Chimney contract award (FNTF)	0		15-Jan-15																																					◆ Chimney contract award (FNTF)																							
PRMCXXX70	Chimney Design by supplier (2nd phase)	105	29-Jan-15	24-Jun-15																																					24-Jun-15																							
PRMCXXX71	Chimney Dynamic Loads Available for foundations design	0	29-Jan-15																																						◆ Chimney Dynamic Loads Available for foundations design																							
PRMCXXX90	Chimney Contractor Off/on-site Mobilization	35	01-Apr-15	19-May-15																																					19-May-15																							
CONSTRUCTION		702	14-Jul-14 A	22-Mar-17																																																												
CIVIL WORKS		976	14-Jul-14 A	17-Mar-17																																																												

■ Remaining Level of Effort
 ■ Actual Work
 ■ Critical Remaining ...
■ Actual Level of Effort
 ■ Remaining Work
 ◆ Milestone

Note: Third parties' progress to be confirmed by IEP after LNTF or after assignment of contract

Date	Revision	Checked	Approved
01-Dec-14	Contractual version	OMSI	AMR
02-Dec-14	Contractual version	OMSI	AMR



SALEM HARBOUR ENERGY CENTER
EPC LEVEL 2 SCHEDULE



Footprint Power Salem
Harbor Development LP

SHEC_Bid_S14B-1 - SHEC Level 2 client dd Dec02

Activity ID	Activity Name	Original Duration	Start	Finish	2013												2014												2015												2016												2017											
					J	F	M	A	M	J	Jul	A	S	O	N	D	J	F	M	A	M	J	Jul	A	S	O	N	D	J	F	M	A	M	J	Jul	A	S	O	N	D	J	F	M	A	M	J	Jul	A	S	O	N	D	J	F	M	A	M	J	Jul	A	S	O	N	D
CONp0100	Piling negotiation with Bond Brothers	92	17-Oct-14	16-Dec-14																									16-Dec-14																																			
CON1023	Site preparation by EPC Contractor	70	17-Dec-14	24-Feb-15																									24-Feb-15																																			
CON1000	Mobilization at site/temporary facilities	70	17-Dec-14	24-Feb-15																									24-Feb-15																																			
CONp0110	Piling mobilization at site (LOI)	10	17-Dec-14	26-Dec-14																									26-Dec-14																																			
CON1025	Piling, foundations and underground works	547	27-Dec-14	26-Jun-16																																					26-Jun-16																							
CON1075	Erection buildings and rest of civil works	317	22-Jul-15	03-Jun-16																																					03-Jun-16																							
Date of final demolition areas		163	14-Jul-14	24-Dec-14																																																												
A1010	Demolition contract award	0		14-Jul-14	◆ Demolition contract award																																																											
A1070	HRSG/GT Area U-1	0		15-Dec-14*	◆ HRSG/GT Area U-1																																																											
A1080	ST U-2	0		15-Dec-14*	◆ ST U-2																																																											
A1040	Transformer area GT's/ Stack	0		15-Dec-14*	◆ Transformer area GT's/ Stack																																																											
A1050	ACC Area	0		15-Dec-14*	◆ ACC Area																																																											
A1060	HRSG/GT Area U-2 ,transformer GT1 And ACC area ST AREA	0		15-Dec-14*	◆ HRSG/GT Area U-2 ,transformer GT1 And ACC area ST AREA																																																											
A1090	Workshop area Park	0		24-Dec-14*	◆ Workshop area Park																																																											
A1020	Provisional installations (parking/work shop container) PARK ADM	0		24-Dec-14*	◆ Provisional installations (parking/work shop container) PARK ADM BLDG																																																											
Site preparation		240	01-Dec-14	28-Jul-15																																																												
CON4750	First Soil Cargo at site (by Footprint)	0		01-Dec-14	◆ First Soil Cargo at site (by Footprint)																																																											
CON4280	Soil inspection and Initial Filling	100	16-Dec-14	25-Mar-15	25-Mar-15																																																											
CON1005	Site preparation	70	17-Dec-14	24-Feb-15	24-Feb-15																																																											
CON1010	Temporary roads/sewage net	91	27-Dec-14	27-Mar-15	27-Mar-15																																																											
CON1020	Piling GT,GTG U-I	45	26-Jan-15	11-Mar-15	11-Mar-15																																																											
CON1021	Piling GT,GTG U-II	45	05-Feb-15	21-Mar-15	21-Mar-15																																																											
CON1029	Piling GT/HRSG's Building U-II	60	22-Feb-15	22-Apr-15	22-Apr-15																																																											
CON1015	Piling Chimney	49	24-Feb-15	14-Apr-15	14-Apr-15																																																											
CON1028	Piling GT/HRSG's Building U-I	60	25-Feb-15	25-Apr-15	25-Apr-15																																																											
CON1022	Piling HRSG's U-I	45	12-Mar-15	25-Apr-15	25-Apr-15																																																											
CON1024	Piling HRSG's U-II	45	22-Mar-15	05-May-15	05-May-15																																																											
CON4220	Piling ACC	75	15-Apr-15	28-Jun-15	28-Jun-15																																																											
CON4230	Piling ST, STG pedestal U-I	45	29-Apr-15	13-Jun-15	13-Jun-15																																																											
CON4235	Piling ST, STG Building	60	29-May-15	28-Jul-15	28-Jul-15																																																											
CON4233	Piling ST, STG pedestal U-II	45	13-Jun-15	28-Jul-15	28-Jul-15																																																											
Turbine buildings		456	23-Apr-15	21-Jul-16																																																												
GT/HRSG BUILDING U-I		449	26-Apr-15	17-Jul-16																																																												
CONGT1050	Foundations GT/HRSG building U-I	90	26-Apr-15	24-Jul-15	24-Jul-15																																																											
CONGT1080	Erection GT/HRSG building U-I structure (GT AREA)	60	25-Jul-15	22-Sep-15	22-Sep-15																																																											
CONGT1085	GT/HRSG building cladding (GT AREA)	40	23-Sep-15	01-Nov-15	01-Nov-15																																																											
CONGT1087	GT/HRSG building U-I Ready for erection (GT AREA)	0	01-Nov-15		◆ GT/HRSG building U-I Ready for erection (GT AREA)																																																											
CONGT1078	Erection GT/HRSG building U-I structure (HRSG AREA)	75	29-Jan-16	12-Apr-16	12-Apr-16																																																											
CONGT2125	GT/HRSG building Architectural and finishes	130	10-Mar-16	17-Jul-16	17-Jul-16																																																											
CONGT2105	GT/HRSG building cladding (HRSG AREA)	60	04-Apr-16	02-Jun-16	02-Jun-16																																																											
CONGT2115	GT/HRSG building U-I Ready for erection (HRSG AREA)	0	03-Jun-16		◆ GT/HRSG building U-I Ready for erection (HRSG AREA)																																																											
GT/HRSG BUILDING U-II		456	23-Apr-15	21-Jul-16																																																												
CONGT2055	Foundations GT/HRSG building U-II	90	23-Apr-15	21-Jul-15	21-Jul-15																																																											
CONGT2065	Erection GT/HRSG building U-II structure (GT AREA)	60	22-Jul-15	19-Sep-15	19-Sep-15																																																											
CONGT2085	GT/HRSG building cladding (GT AREA)	40	20-Sep-15	29-Oct-15	29-Oct-15																																																											
CONGT2095	GT/HRSG building U-II Ready for erection (GT AREA)	0	30-Oct-15		◆ GT/HRSG building U-II Ready for erection (GT AREA)																																																											
CONGT2135	Erection GT/HRSG building U-II structure (HRSG AREA)	65	13-Feb-16	17-Apr-16	17-Apr-16																																																											
CONGT2175	GT/HRSG building U-II Architectural and finishes	130	14-Mar-16	21-Jul-16	21-Jul-16																																																											
CONGT2155	GT/HRSG building cladding (HRSG AREA)	60	08-Apr-16	06-Jun-16	06-Jun-16																																																											
CONGT2165	GT/HRSG building U-II Ready for erection (HRSG AREA)	0	07-Jun-16		◆ GT/HRSG building U-II Ready for erection (HRSG AREA)																																																											
ST BUILDING		247	28-Jul-15	31-Mar-16																																																												
CONST9051	Foundations ST Building	71	28-Jul-15	07-Oct-15	07-Oct-15																																																											
CONST9082	Erection turbine building structures: ST area	70	11-Oct-15	20-Dec-15	20-Dec-15																																																											
CONST9091	Finish main steel struct erection T's buildings: ST area	0	30-Nov-15		◆ Finish main steel struct erection T's buildings: ST area																																																											
CONST9455	ST Building Cladding	60	30-Nov-15	29-Jan-16	29-Jan-16																																																											
CONST9445	ST Building Ready for erection	0	29-Jan-16		◆ ST Building Ready for erection																																																											
CONST9440	Steam Turbine buildings finalization	62	29-Jan-16	31-Mar-16	31-Mar-16																																																											
Turbine pedestals		254	12-Mar-15	20-Nov-15																																																												
CON1040	GT pedestal U-I	93	12-Mar-15	12-Jun-15	12-Jun-15																																																											
CON1041	GT pedestal U-II	93	11-Apr-15	12-Jul-15	12-Jul-15																																																											
CON1042	ST pedestal U-I	104	27-Jun-15	09-Oct-15	09-Oct-15																																																											

■ Remaining Level of Effort
 ■ Actual Work
 ■ Critical Remaining ...
■ Actual Level of Effort
 ■ Remaining Work
 ◆ Milestone

Date	Revision	Checked	Approved
01-Dec-14	Contractual version	OMSI	AMR
02-Dec-14	Contractual version	OMSI	AMR



SALEM HARBOUR ENERGY CENTER
EPC LEVEL 2 SCHEDULE



Footprint Power Salem
Harbor Development LP

SHEC_Bid_S14B-1 - SHEC Level 2 client dd Dec02

Activity ID	Activity Name	Original Duration	Start	Finish	2013												2014												2015												2016												2017											
					J	F	M	A	M	J	Jul	A	S	O	N	D	J	F	M	A	M	J	Jul	A	S	O	N	D	J	F	M	A	M	J	Jul	A	S	O	N	D	J	F	M	A	M	J	Jul	A	S	O	N	D	J	F	M	A	M	J	Jul	A	S	O	N	D
CON4440	ST pedestal U-II	101	11-Aug-15	20-Nov-15																																					20-Nov-15																							
HRSG foundations		271	26-Apr-15	21-Jan-16																																																												
CON1030	Foundations HRSG Unit-1	90	26-Apr-15	24-Jul-15																																					24-Jul-15																							
CON4270	Foundations HRSG/stack/racks	271	26-Apr-15	21-Jan-16																																					21-Jan-16																							
CON4300	Foundations Chimney	60	29-Apr-15	28-Jun-15																																					28-Jun-15																							
CON4340	Foundations HRSG Unit 2	90	06-May-15	03-Aug-15																																					03-Aug-15																							
CON4310	Erection Cement Chimney Shell	105	28-Jun-15	11-Oct-15																																					11-Oct-15																							
CON4330	Release Safety area	0		11-Oct-15																																					◆ Release Safety area																							
Main rack		197	11-Oct-15	25-Apr-16																																																												
CON1505	Foundations main rack U-I	45	11-Oct-15	25-Nov-15																																					25-Nov-15																							
CON4350	Foundations main rack U-II	45	11-Oct-15	25-Nov-15																																					25-Nov-15																							
CON4630	Foundations main rack Common	57	26-Oct-15	22-Dec-15																																					22-Dec-15																							
CON4650	Erection main rack structure Common	70	22-Dec-15	01-Mar-16																																					01-Mar-16																							
CON1507	Erection main rack structure U-I	71	16-Jan-16	26-Mar-16																																					26-Mar-16																							
CON4360	Erection main rack structure U-II	68	18-Feb-16	25-Apr-16																																					25-Apr-16																							
Transformers area		181	07-Oct-15	05-Apr-16																																																												
CON1084	Foundations ST transformers	90	07-Oct-15	05-Jan-16																																					05-Jan-16																							
CON1064	Foundations GT transformers	90	06-Jan-16	05-Apr-16																																					05-Apr-16																							
Underground nets		295	11-Apr-15	30-Jan-16																																																												
CON1060	Underground works	295	11-Apr-15	30-Jan-16																																					30-Jan-16																							
Tanks		90	04-Jan-16	03-Apr-16																																																												
CON1480	Foundations tanks	90	04-Jan-16	03-Apr-16																																					03-Apr-16																							
Gas metering station		100	04-Nov-15	12-Feb-16																																																												
CON1220	Foundation/Erection gas metering station building	100	04-Nov-15	12-Feb-16																																					12-Feb-16																							
Other buildings		303	27-Aug-15	26-Jun-16																																																												
CON1450	Erect aux boiler Building	167	20-Oct-15	04-Apr-16																																					04-Apr-16																							
CON1058	Foundations Cooling water system	66	25-Nov-15	30-Jan-16																																					30-Jan-16																							
CON1444	Foundations PDC 25	61	01-Feb-16	02-Apr-16																																					02-Apr-16																							
CON1470	Foundations/Erection rest of buildings	120	04-Feb-16	03-Jun-16																																					03-Jun-16																							
CON1441	Foundations PDC 45	59	28-Apr-16	26-Jun-16																																					26-Jun-16																							
Control building		261	27-Aug-15	14-May-16																																																												
CON1052	Foundations operations building	58	27-Aug-15	24-Oct-15																																					24-Oct-15																							
CON1090	Erection operations building main structures	81	24-Oct-15	13-Jan-16																																					13-Jan-16																							
CON1095	Operation building finalization	122	13-Jan-16	14-May-16																																					14-May-16																							
CON1105	Operations building ready for elect erection	0	13-Mar-16																																						◆ Operations building ready for elect erection																							
Rest civil works		627	29-Jun-15	17-Mar-17																																																												
CON1110	Foundations ACCs	120	29-Jun-15	26-Oct-15																																					26-Oct-15																							
CON1120	Rest of civil works	267	10-Sep-15*	03-Jun-16																																					03-Jun-16																							
CON1530	Final roads	50	26-Jan-17	17-Mar-17																																																	17-Mar-17											
ERECTION		378	11-Oct-15	22-Mar-17																																																												
MECHANICAL		370	11-Oct-15	12-Mar-17																																																												
Gas Turbine and Steam Turbine		405	01-Nov-15	10-Dec-16																																																												
CON1100	GT1 maneuver and erection (mec+ele+instr)	248	01-Nov-15	06-Jul-16																																					06-Jul-16																							
CON1112	GT2 maneuver and erection (mec+ele+instr)	255	01-Dec-15	11-Aug-16																																					11-Aug-16																							
CON1130	ST1 maneuver and erection (mec+ele+instr)	213	29-Feb-16	28-Sep-16																																					28-Sep-16																							
CON1132	ST2 maneuver and erection (mec+ele+instr)	213	30-Mar-16	28-Oct-16																																					28-Oct-16																							
CON1380	Finish gas turbines I erection (mec+ele+instr)	0	05-Aug-16																																						◆ Finish gas turbines I erection (mec+ele+instr)																							
CON1385	Finish gas turbines II erection (mec+ele+instr)	0	11-Sep-16																																						◆ Finish gas turbines II erection (mec+ele+instr)																							
CON1400	Finish steam turbine I erection (mec+ele+instr)	0	15-Nov-16																																						◆ Finish steam turbine I erection (mec+ele+instr)																							
CON4460	Finish steam turbine II erection (mec+ele+instr)	0	10-Dec-16																																						◆ Finish steam turbine II erection (mec+ele+instr)																							
HRSG		312	11-Oct-15	19-Aug-16																																																												
CON1145	Liners erection and stack finalization	266	11-Oct-15	03-Jul-16																																					03-Jul-16																							
CON1140	HRSG1 erection	233	27-Nov-15	16-Jul-16																																					16-Jul-16																							
CON1142	HRSG2 erection	233	30-Dec-15	18-Aug-16																																					18-Aug-16																							
CON1370	Finish erection of HRSGs U-I	0	17-Jul-16																																						◆ Finish erection of HRSGs U-I																							
CON4450	Finish erection of HRSGs U-II	0	19-Aug-16																																						◆ Finish erection of HRSGs U-II																							
BOP		335	28-Nov-15	12-Mar-17																																																												
CON1280	Main systems erection: condensate, feedwater and steam	365	28-Nov-15	27-Nov-16																																					27-Nov-16																							
CON1290	Cooling water system erection	270	02-Feb-16	29-Oct-16																																					29-Oct-16																							
CON1304	Auxiliary systems erection	217	12-Feb-16	17-Sep-16																																					17-Sep-16																							
CON1294	Install piping and chemical systems	268	25-Mar-16	18-Dec-16																																					18-Dec-16																							

█ Remaining Level of Effort
 █ Actual Work
 █ Critical Remaining ...
█ Actual Level of Effort
 █ Remaining Work
 ◆ ◆ Milestone

Note: Third parties' progress to be confirmed by IEP after LNTP or after assignment of contract

Date	Revision	Checked	Approved
01-Dec-14	Contractual version	OMSI	AMR
02-Dec-14	Contractual version	OMSI	AMR



SALEM HARBOUR ENERGY CENTER
EPC LEVEL 2 SCHEDULE



Footprint Power Salem
Harbor Development LP

SHEC_Bid_S14B-1 - SHEC Level 2 client dd Dec02

Activity ID	Activity Name	Original Duration	Start	Finish	2013												2014												2015												2016												2017											
					J	F	M	A	M	J	Jul	A	S	O	N	D	J	F	M	A	M	J	Jul	A	S	O	N	D	J	F	M	A	M	J	Jul	A	S	O	N	D	J	F	M	A	M	J	Jul	A	S	O	N	D	J	F	M	A	M	J	Jul	A	S	O	N	D
Plant equipment					260	28-Nov-15	27-Nov-16																																																									
CON1170	Install Air cooled condensers	365	28-Nov-15	27-Nov-16																																																												
CON1190	Install aux cooling water equipment	78	02-Feb-16	20-Apr-16																																																												
CON1310	Install gas regulation station	121	12-Feb-16	12-Jun-16																																																												
CON1180	Air cooled condenser main duct install (Rack interface)	83	01-Mar-16	24-Jun-16																																																												
CON1250	Install HVAC electronic room/DCS	75	13-Mar-16	27-May-16																																																												
CON1260	Rest of mechanical systems erection	170	15-Mar-16	31-Aug-16																																																												
CON1240	Install fire protection system	180	15-Mar-16	11-Sep-16																																																												
CON1150	Install steam system (bypass valves) U-I	45	22-Mar-16	05-May-16																																																												
CON4660	Install waste water equipment	78	24-Mar-16	10-Jun-16																																																												
CON1230	Install rest of auxiliary plant system	100	04-Apr-16	13-Jul-16																																																												
CON4670	Install Auxiliary boiler	100	11-Apr-16	20-Jul-16																																																												
CON1320	Install instrument air system	33	18-Apr-16	20-May-16																																																												
CON1151	Install steam system (bypass valves) U-II	45	21-Apr-16	04-Jun-16																																																												
CON4680	Install Tanks	146	24-Apr-16	17-Sep-16																																																												
CON1160	Install feedwater system pumps U-I	45	18-May-16	02-Jul-16																																																												
CON1161	Install feedwater system pumps U-II	45	18-May-16	02-Jul-16																																																												
CON1210	Install sample and injection systems	55	20-Jul-16	12-Sep-16																																																												
Piping					376	01-Mar-16	12-Mar-17																																																									
CON1270	Install Piping common systems	292	01-Mar-16	18-Dec-16																																																												
CON1312	Install natural gas piping	109	25-Mar-16	12-Jul-16																																																												
CON1275	Install piping main systems U-I	110	21-Jun-16	08-Oct-16																																																												
CON1279	Install piping auxiliary systems U-I	125	30-Jun-16	01-Nov-16																																																												
CON1281	Install piping auxiliary systems U-II	125	30-Jun-16	01-Nov-16																																																												
CON1277	Install piping main systems U-II	108	23-Jul-16	07-Nov-16																																																												
CON1315	Final connection to natural gas supply pipe line	45	26-Aug-16	10-Oct-16																																																												
CON4260	Final piping erection after steam blow U-I	15	15-Feb-17	01-Mar-17																																																												
CON4470	Final piping erection after steam blow U-II	15	26-Feb-17	12-Mar-17																																																												
ELECTRICAL					358	29-Mar-16	22-Mar-17																																																									
CON3090	Transformers, isophase bus and breakers erection	219	29-Mar-16	03-Nov-16																																																												
CON3100	Cables, trays and rest electrical systems erection	274	19-Apr-16	17-Jan-17																																																												
CON3060	Erect and connect DCS system	110	15-Jun-16	02-Oct-16																																																												
Transformers					118	29-Mar-16	25-Jul-16																																																									
CON3160	Install ST1 main transformer	80	29-Mar-16	17-Jun-16																																																												
CON4490	Install ST2 main transformer	80	29-Mar-16	17-Jun-16																																																												
CON4480	Install GT2 main transformers	80	05-Apr-16	24-Jun-16																																																												
CON3000	Install GT1 main transformers	80	05-Apr-16	24-Jun-16																																																												
CON3170	Install GT1 aux transformers	60	26-May-16	25-Jul-16																																																												
CON4500	Install GT2 aux transformers	60	26-May-16	25-Jul-16																																																												
Isophase bars and breakers					201	16-Apr-16	03-Nov-16																																																									
CON3040	Install GT1 isophase bus and gen breakers	120	16-Apr-16	14-Aug-16																																																												
CON4510	Install GT2 isophase bus and gen breakers	120	18-Apr-16	15-Aug-16																																																												
CON4240	Install ST1 isophase bus and gen breakers	80	14-Aug-16	02-Nov-16																																																												
CON4520	Install ST2 isophase bus and gen breakers	80	16-Aug-16	03-Nov-16																																																												
MV and LV system					10	05-Jul-16	15-Jul-16																																																									
CON3020	Install PDC 25	10	05-Jul-16	15-Jul-16																																																												
CON3030	Install PDC 45	10	05-Jul-16	15-Jul-16																																																												
Cable and trays					338	19-Apr-16	22-Mar-17																																																									
CON4550	Install cables trays Rest areas	185	19-Apr-16	20-Oct-16																																																												
CON4540	Install cables trays ST Building	98	04-May-16	09-Aug-16																																																												
CON3050	Install cables trays GT/HRSG U-I Building	99	09-May-16	15-Aug-16																																																												
CON4530	Install cables trays GT/HRSG U-II Building	100	07-Jun-16	14-Sep-16																																																												
CON4590	Cables pulling & connection electrical systems U-I	151	04-Jul-16	01-Dec-16																																																												
CON4570	Install Instrument U-I systems	120	15-Jul-16	11-Nov-16																																																												
CON4600	Cables pulling & connection electrical systems U-II	149	15-Jul-16	11-Dec-16																																																												
CON4580	Install Instrument U-II systems	120	21-Jul-16	17-Nov-16																																																												
CON4610	Cables pulling & connection mechanical systems U-I	149	16-Aug-16	11-Jan-17																																																												
CON4620	Cables pulling & connection mechanical systems U-II	150	21-Aug-16	17-Jan-17																																																												
CON4560	Install Instrument Common systems	120	30-Aug-16	28-Dec-16																																																												
CON4720	Cable Pulling & connection - plant finalization	50	01-Feb-17	22-Mar-17																																																												
Rest of electrical systems					205	14-May-16	04-Dec-16																																																									

■ Remaining Level of Effort
 ■ Actual Work
 ■ Critical Remaining ...
■ Actual Level of Effort
 ■ Remaining Work
 ◆ ◆ Milestone

Date	Revision	Checked	Approved
01-Dec-14	Contractual version	OMSI	AMR
02-Dec-14	Contractual version	OMSI	AMR



SALEM HARBOUR ENERGY CENTER
EPC LEVEL 2 SCHEDULE



Footprint Power Salem
Harbor Development LP

SHEC_Bid_S14B-1 - SHEC Level 2 client dd Dec02

Activity ID	Activity Name	Original Duration	Start	Finish	2013												2014												2015												2016												2017											
					J	F	M	A	M	J	Jul	A	S	O	N	D	J	F	M	A	M	J	Jul	A	S	O	N	D	J	F	M	A	M	J	Jul	A	S	O	N	D	J	F	M	A	M	J	Jul	A	S	O	N	D	J	F	M	A	M	J	Jul	A	S	O	N	D
CON3070	Install rest of electrical systems	185	14-May-16	14-Nov-16																																																	14-Nov-16											
CON3150	Install lighting system	200	19-May-16	04-Dec-16																																																	04-Dec-16											
CON3140	Finish install emergency diesel	0	13-Jun-16																																																		◆ Finish install emergency diesel											
Substation and HV line		143	17-Jun-16	07-Nov-16																																																												
CON3120	UG line, structures and substation erection	120	17-Jun-16	15-Oct-16																																																	15-Oct-16											
CON4250	Final connection to HV line	23	15-Oct-16	07-Nov-16																																																	07-Nov-16											
COMMISSIONING		178	25-Sep-16	31-May-17																																																												
CON4003	BOP system Common commissioning	185	25-Sep-16	28-Mar-17																																																	28-Mar-17											
CON3900	Commissioning & Start-up	238	25-Sep-16	20-May-17																																																	20-May-17											
CON4000	Temporary power for LV switchgear and batteries	0	25-Sep-16																																																		◆ Temporary power for LV switchgear and batteries											
CON4006	BOP system commissioning U-I	135	15-Oct-16	26-Feb-17																																																	26-Feb-17											
CON4008	BOP system commissioning U-II	133	20-Oct-16	01-Mar-17																																																	01-Mar-17											
CON4020	HRSG1 chemical cleaning	40	29-Oct-16	07-Dec-16																																																	07-Dec-16											
CON4005	Switchyard commissioning	20	07-Nov-16	27-Nov-16																																																	27-Nov-16											
CON4690	GT system Cold commissioning U-I	60	17-Nov-16	15-Jan-17																																																	15-Jan-17											
CON4010	Finish install emergency diesel	0	27-Nov-16																																																		◆ Finish install emergency diesel											
CON4710	Commissioning Air Condenser	45	28-Nov-16	27-Jan-17																																																	27-Jan-17											
CON4110	HRSG2 chemical cleaning	40	28-Nov-16	06-Jan-17																																																	06-Jan-17											
CON4700	GT system Cold commissioning U-II	60	02-Dec-16	30-Jan-17																																																	30-Jan-17											
CON4041	GT1 Hot Commissioning	30	16-Jan-17	14-Feb-17																																																	14-Feb-17											
CON4040	First fire GT1	0	16-Jan-17																																																		◆ First fire GT1											
CON4030	HRSG1 Steam blowing	25	21-Jan-17	14-Feb-17																																																	14-Feb-17											
CON4145	GT2 Hot Commissioning	30	31-Jan-17	01-Mar-17																																																	01-Mar-17											
CON4140	First fire GT2	0	31-Jan-17																																																		◆ First fire GT2											
CON4120	HRSG2 Steam blowing	20	06-Feb-17	25-Feb-17																																																	25-Feb-17											
CON4035	HRSG1 Hot commissioning	30	02-Mar-17	31-Mar-17																																																	31-Mar-17											
CON4050	First steam to ST1	0	06-Mar-17																																																		◆ First steam to ST1											
CON4060	Base load plant 1	2	09-Mar-17	10-Mar-17																																																	10-Mar-17											
CON4070	Plant 1 tuning	20	11-Mar-17	30-Mar-17																																																	30-Mar-17											
CON4130	HRSG2 Hot commissioning	30	13-Mar-17	11-Apr-17																																																	11-Apr-17											
CON4150	First steam to ST2	0	17-Mar-17																																																		◆ First steam to ST2											
CON4160	Base load plant 2	2	20-Mar-17	21-Mar-17																																																	21-Mar-17											
CON4170	Plant 2 tuning	20	22-Mar-17	10-Apr-17																																																	10-Apr-17											
CON4072	Performance test plant 1	10	31-Mar-17	09-Apr-17																																																	09-Apr-17											
CON4073	Finish of performance test plant 1	0	10-Apr-17																																																		◆ Finish of performance test plant 1											
CON4080	Reliability run plant 1	29	10-Apr-17	08-May-17																																																	08-May-17											
CON4180	Performance test plant 2	10	11-Apr-17	20-Apr-17																																																	20-Apr-17											
CON4190	Finish of performance test plant 2	0	21-Apr-17																																																		◆ Finish of performance test plant 2											
CON4200	Reliability run plant 2	29	21-Apr-17	19-May-17																																																	19-May-17											
CON4100	Taking over date plant 1	0	09-May-17																																																		◆ Taking over date plant 1											
CON4290	Plant ready for power production	1	20-May-17	20-May-17																																																	20-May-17											
CON4210	Taking over date plant 2	0	20-May-17																																																		◆ Taking over date plant 2											
CON4320	FINAL TEST AND INTEGRATED TUNING	12	20-May-17	31-May-17																																																	31-May-17											
CON4430	COD LIMIT	0		31-May-17*																																																	◆ COD LIMIT											
SHEC_Berm and Park		482	05-Feb-16	31-May-17																																																												
Berm and Park		482	05-Feb-16	31-May-17																																																												
CON4410	Gabion Wall foundations and erection	195	05-Feb-16	17-Aug-16																																																	17-Aug-16											
CON4420	Park erection	166	18-Aug-16	31-Jan-17																																																	31-Jan-17											
A1000	Park Finalization Limit	0																																																			◆ Park Finalization Limit											
SHEC_Dock		239	10-Feb-15	06-Oct-15																																																												
ENG4140	Dock design - preliminary	93	10-Feb-15	13-May-15																																																	13-May-15											
CON4730	Dock Construction - preliminary	120	14-May-15	10-Sep-15																																																	10-Sep-15											
A1130	Dock Finalization Limit	0																																																			◆ Dock Finalization Limit											

█ Remaining Level of Effort
 █ Actual Work
 █ Critical Remaining ...
█ Actual Level of Effort
 █ Remaining Work
 ◆ Milestone

Note: Third parties' progress to be confirmed by IEP after LNTP or after assignment of contract

Date	Revision	Checked	Approved
01-Dec-14	Contractual version	OMSI	AMR
02-Dec-14	Contractual version	OMSI	AMR